

Buccaneer

Suitable for use with tractors of between 40hp to 180hp and features a heavy duty gearbox. The robust build means that the smaller 1.3m cutting machine weighs 658kg while the wider 2.5m model comes in at 2,095Kgs.

The standard specification of the new Bomford Buccaneer HDX includes a front double-row chain guard, Cat 2/3 three-point linkage and heavy-duty replaceable skids. A front mounted version of the Buccaneer HDX is also available.

Key Features

- Choice of 6 cutting width options
- Fixed or swinging flail options
- Six belt driven (12 on HDX model)
- Hydraulically adjustable throughout flap
- 40-180hp tractor requirement options
- Rear pushbar standard on 2.24m models
- Replaceable skids
- 540rpm or 1,000rpm



Want to know more about the Buccaneer range?

Scan the QR code to the left with a smart phone or tablet and compatible app to instantly view the page.

Alternatively visit: <http://www.bomford-turner.com/forestry/buccaneer/>



Heavy duty drive

7 belt drive on SD models and 12 belts (dual drive) on HDX ranges.

Swinging hammer options

Ideal for use on green vegetation for shredding.

Protection

Double rows of heavy chains and adjustable skids.

Product Specification

SD Range	SD130	SD150	SD180	SD200	SD225
Width of Cut	1300mm 4'3"	1500mm 4'11"	1800mm 5'10"	2000mm 6'6"	2250mm 7'4"
Overall Width	1500mm 4'11"	1750mm 5'8"	2000mm 6'6"	2250mm 7'4"	2500mm 8'2"
Number of Hammers	20	24	28	32	36
PTO Speed	540	540	540	540	540
Number of Belts	7	7	7	7	7
Hammer Type	Swing	Swing	Swing	Swing	Swing
Weight	658kg 1451lbs	788kg 1737lbs	952kg 2099lbs	1116kg 2460lbs	1280kg 2820lbs
Tractor HP	40-120hp	50-120hp	65-120hp	75-120hp	90-120hp
Additional Features	RR Pushbar	RR Pushbar	RR Pushbar	RR Pushbar	RR Pushbar

HDX Range	HDX180	HDX200	HDX225	HDX250
Width of Cut	1800mm 5'10"	2000mm 6'6"	2250mm 7'4"	2500mm 8'2"
Overall Width	2210mm 7'3"	2410mm 7'10"	2660mm 8'8"	2720mm 8'11"
Number of Hammers	16	20	20	24
PTO Speed	1000	1000	1000	1000
Number of Belts	12	12	12	12
Hammer Type	Swing	Swing	Swing	Swing
Weight	1690kg 3726lbs	1815kg 4001lbs	1935kg 4265lbs	2095kg 4619lbs
Tractor HP	60-180hp	80-180hp	90-180hp	90-180hp
Additional Features	RR Pushbar	RR Pushbar	RR Pushbar	RR Pushbar

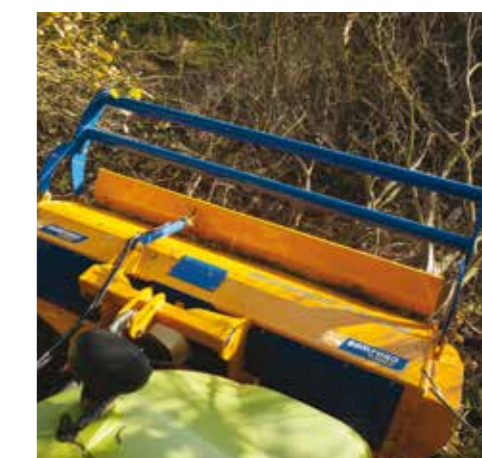


Fixed Hammers

Options available. Suitable for managing wooded areas and providing a chipped wood finish. Benefits are mulching the debris within the soil leaving the ground level.

SDF Range	SDF130	SDF150	SDF180	SDF200	SDF225
Width of Cut	1300mm 4'3"	1500mm 4'11"	1800mm 5'10"	2000mm 6'6"	2250mm 7'4"
Overall Width	1500mm 4'11"	1750mm 5'8"	2000mm 6'6"	2250mm 7'4"	2500mm 8'2"
Number of Hammers	22	26	30	34	36
PTO Speed	540	540	540	540	540
Number of Belts	7	7	7	7	7
Hammer Type	Fixed	Fixed	Fixed	Fixed	Fixed
Weight	665kg 1466lbs	815kg 1797lbs	977kg 2154lbs	1148kg 2531lbs	1305kg 2877lbs
Tractor HP	40-120hp	50-120hp	65-120hp	75-120hp	90-120hp
Additional Features	RR Pushbar	RR Pushbar	RR Pushbar	RR Pushbar	RR Pushbar

HDXF Range	HDXF180	HDXF200	HDXF225	HDXF250
Width of Cut	1800mm 5'10"	2000mm 6'6"	2250mm 7'4"	2500mm 8'2"
Overall Width	2210mm 7'3"	2410mm 7'10"	2660mm 8'8"	2720mm 8'11"
Number of Hammers	30	34	36	40
Number of Belts	12	12	12	12
PTO Speed	1000	1000	1000	1000
Hammer Type	Fixed	Fixed	Fixed	Fixed
Weight	1556kg 3430lbs	1681kg 3706lbs	1805kg 3979lbs	1963kg 4328lbs
Tractor HP	90-180hp	100-180hp	120-180hp	130-180hp
Additional Features	RR Pushbar	RR Pushbar	RR Pushbar	RR Pushbar



Push Bars

Rear push bars fitted as standard enable material to be pushed over and presented to the cutting rotor. Hydraulic rear hood for closing down rear opening for mulching.